

EROSION & SEDIMENT CONTROL GENERAL NOTES:

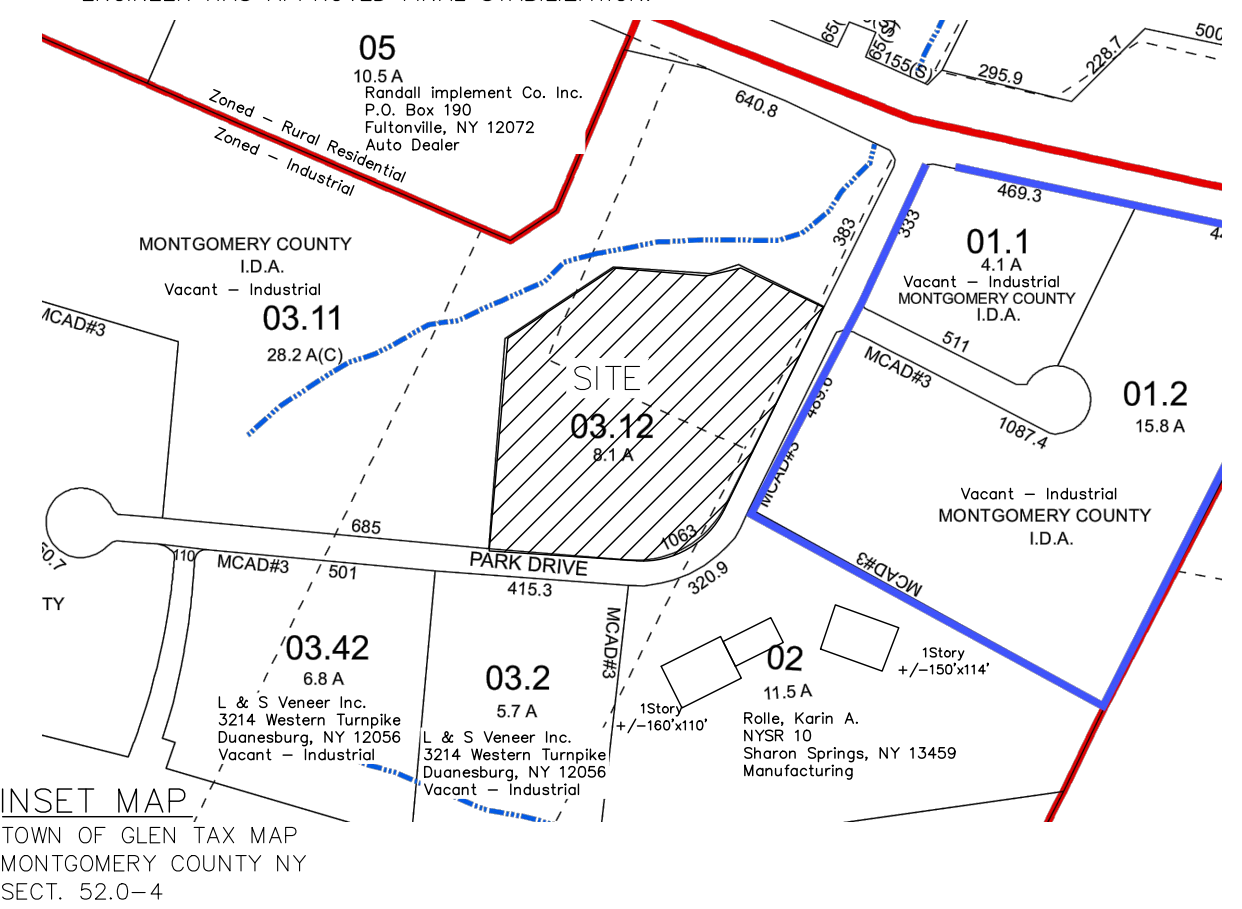
- THIS PROJECT QUALIFIES FOR COVERAGE UNDER THE NYSDEC GENERAL PERMIT GP 0-15-002. A NOTICE OF INTENT (NOI) MUST BE FILED WITH THE NEW YORK STATE DEPARTMENT OF ENVIRONMENTAL CONSERVATION AND AUTHORIZATION RECEIVED PRIOR TO CONSTRUCTION ACTIVITIES.
- A STORMWATER POLLUTION PREVENTION PLAN HAS BEEN PREPARED IN ACCORDANCE WITH THE NEW YORK STATE DEPARTMENT OF ENVIRONMENTAL CONSERVATION SPDES GENERAL PERMIT FOR STORMWATER DISCHARGES GP 0-15-002 AND SHALL BE CONSIDERED SUPPLEMENTAL TO THESE PLANS.
- ANY CONTRACTOR INVOLVED IN ANY EARTHWORK ACTIVITY SHALL REVIEW ALL PLANS AND PERMIT CONDITIONS AND CERTIFY ACKNOWLEDGEMENT IN WRITING. IT IS THE CONTRACTOR'S RESPONSIBILITY TO IMPLEMENT ALL EROSION CONTROLS DESCRIBED IN GP 0-15-002, AND IT IS NOT THE INTENT OF THESE DRAWINGS TO REPLACE OR DISSEMINATE THE PERMIT REQUIREMENTS. THE CONTRACTOR SHALL REMAIN IN COMPLIANCE WITH THE PERMIT AT ALL TIMES.
- NO MORE THAN FIVE (5) ACRES OF SITE SHALL BE DISTURBED AT ONE TIME. THE CONTRACTOR SHALL COORDINATE EARTHWORK ACTIVITIES AND IMPLEMENTATION OF SOIL STABILIZATION MEASURES TO ENSURE COMPLIANCE WITH THIS REQUIREMENT.
- DISTURBED AREAS SHALL NOT BE LEFT UNSTABILIZED FOR MORE THAN 14 DAYS AFTER COMPLETION OR SUSPENSION OF GRADING OPERATIONS.
- EROSION AND SEDIMENT CONTROL MEASURES SHALL BE IMPLEMENTED IN ACCORDANCE WITH THE LATEST EDITION OF NEW YORK STANDARDS AND SPECIFICATIONS FOR EROSION AND SEDIMENT CONTROL" (aka: THE BLUE BOOK) EROSION CONTROL DEVICES SHALL BE INSTALLED PRIOR TO ANY CONSTRUCTION ACTIVITIES.
- EROSION CONTROL DEVICES SHALL NOT BE REMOVED UNTIL THE TOWN ENGINEER HAS APPROVED FINAL STABILIZATION.
- SILT FENCE AND OTHER EROSION CONTROL DEVICES SHALL BE INSTALLED AND MAINTAINED IN ACCORDANCE WITH THESE DETAIL SHEETS AND SECTION 7A OF THE BLUE BOOK.
- PRIOR TO ANY CONSTRUCTION ACTIVITY, THE STABILIZED CONSTRUCTION ENTRANCES SHALL BE INSTALLED.

TEMPORARY EROSION AND SEDIMENT CONTROL NOTES:

- IT IS THE INTENT OF THESE PLANS AND NOTES TO BE USED AS A GUIDE BY THE CONTRACTOR TO ENSURE THAT NO ERODED MATERIAL MIGRATES FROM THE SITE OR ENTERS ANY WATER COURSE. IT IS THE CONTRACTOR'S RESPONSIBILITY TO ENSURE THAT THIS GOAL IS MET, BY IMPLEMENTING THESE PLANS AND ANY ADDITIONAL MEANS THAT MAY BE NECESSARY. FURTHER MEASURES MAY BE REQUIRED BY THE CITY, VILLAGE, OR TOWN ENGINEER. WHILE MANY OF THE EROSION CONTROL DETAILS CONTAINED WITHIN THESE PLANS ARE TAKEN FROM THE BLUE BOOK, THE CONTRACTOR SHOULD CONSIDER ANY OF THE DETAILS CONTAINED IN SECTION 7A OF THE BLUE BOOK AS ACCEPTABLE PRACTICE IN THE APPROPRIATE APPLICATION.
- THE OWNER/OPERATOR SHALL INSPECT AND MAINTAIN EROSION CONTROL MEASURES DAILY AND AFTER EACH RAINFALL EVENT THROUGH THE ENTIRE DEVELOPMENT PROCESS. TO ASSURE PROPER FUNCTION, SILTATION BARRIERS SHALL BE MAINTAINED IN GOOD CONDITION AND REINFORCED, EXTENDED, REPAIRED, RE-SEEDED AND PROTECTED FROM FURTHER EROSION. ALL SEDIMENT ACCUMULATED SHALL BE REMOVED AND CONTAINED IN APPROPRIATE SPOIL AREAS. WATER SHALL BE APPLIED TO NEWLY SEEDING AREAS AS NEEDED UNTIL GRASS COVER IS WELL ESTABLISHED. DURING THESE PERIODIC INSPECTIONS, THE FOLLOWING ITEMS SHOULD BE PAID PARTICULAR ATTENTION: A. SILT FENCING SHALL BE INSPECTED FOR UNDERMINING AND DETERIORATION. B. SEEDING/MULCHED AREAS SHALL BE INSPECTED TO SEE THAT A GOOD STAND IS MAINTAINED. AREAS SHALL BE REPAIRED AS NECESSARY.
- PRIOR TO ANY CONSTRUCTION ACTIVITY, THE STABILIZED CONSTRUCTION ENTRANCES SHALL BE INSTALLED.
- SILT FENCE AND OTHER EROSION CONTROL DEVICES SHALL BE INSTALLED AND MAINTAINED IN ACCORDANCE WITH THESE DETAIL SHEETS AND SECTION 7A OF THE BLUE BOOK. SILT FENCING SHALL BE INSTALLED AT THE PERIMETER OF ALL SLOPES TO BE GRADED, PRIOR TO GRADING OPERATIONS.
- CLEARING OPERATIONS SHALL BE LIMITED TO ACTIVE WORK AREAS.
- CARE SHALL BE TAKEN TO PRESERVE AS MUCH EXISTING VEGETATION AS POSSIBLE AND HEALTHY TREES OF DESIRABLE SPECIES SHALL BE PROTECTED.
- CONSTRUCTION TRAFFIC SHALL NOT CROSS STREAMS OR DITCHES EXCEPT AT SUITABLE CROSSING FACILITIES. EQUIPMENT SHALL NOT OPERATE, UNNECESSARILY, WITHIN WATERWAYS OR DRAINAGE DITCHES.
- EXISTING PAVEMENT AREAS SHALL BE CLEANED AT THE DIRECTION OF THE CITY, VILLAGE, OR TOWN ENGINEER.
- WATER TRUCKS SHALL BE USED TO MINIMIZE DUST POLLUTION ON SITE, AND ON ADJACENT ROADWAY AREAS AS DIRECTED BY THE CITY, VILLAGE, OR TOWN ENGINEER.
- ANY WATER PUMPED AS A RESULT OF DEWATERING ACTIVITIES SHALL BE PUMPED INTO A DEWATERING PIT.
- ALL AREAS DISTURBED IN THE CONSTRUCTION PROCESS SHALL BE STABILIZED WITH SEED AND MULCH NO MORE THAN 14 DAYS AFTER THE COMPLETION OF WORK IN SUCH AREA. IT MAY BE NECESSARY TO SEED AND MULCH SOME AREAS SEVERAL TIMES TO MEET THIS REQUIREMENT.
- ALL EROSION CONTROL DEVICES SHALL BE PLACED IN THE ENTIRE PHASE AS SHOWN ON THE EROSION CONTROL PLAN PRIOR TO ANY WORK ON SUCH PHASE.
- STOCK PILES SHALL BE PROTECTED BY SILT FENCE AND SEEDING PER GP 0-15-002. THESE DEVICES SHALL BE MAINTAINED IN GOOD CONDITION UNTIL SAID STOCK PILES ARE REMOVED AND AREAS ARE PERMANENTLY STABILIZED.
- WHEN RUNOFF IS COLLECTED AND FLOW IS CONCENTRATED IN A SWALE OR DRAINAGE DITCH, THEN CHECK DAMS SHALL BE INSTALLED TO REDUCE VELOCITY UNTIL THE SWALE AND THE AREA DRAINING TO THE SWALE ARE STABILIZED. SEDIMENT SHALL BE REMOVED FROM THE DAM AS NEEDED TO ALLOW THE CHANNEL TO DRAIN THROUGH THE DAM AND PREVENT LARGE FLOWS FROM CARRYING SEDIMENT OVER THE DAM.
- IN NO CASE SHALL ERODIBLE MATERIALS BE STOCKPILED WITHIN 25 FEET OF ANY DITCH, STREAM OR OTHER SURFACE WATER BODY.
- THE CONTRACTOR SHALL MAINTAIN A CLEAN CONSTRUCTION AND EQUIPMENT ENTRANCE WHENEVER PRACTICABLE.
- EROSION CONTROL DEVICES SHALL NOT BE REMOVED UNTIL THE CITY, VILLAGE OR TOWN ENGINEER HAS APPROVED FINAL STABILIZATION.

LEGEND

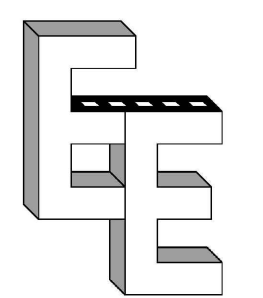
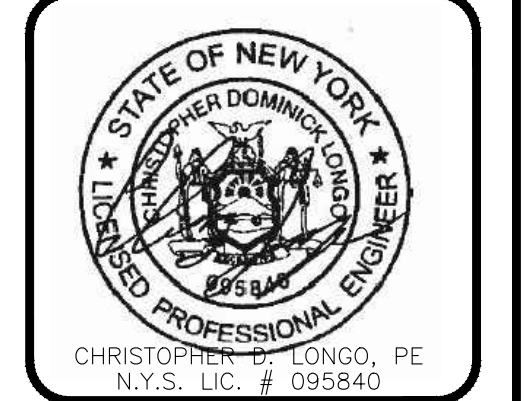
SILT FENCE	SF	SF
LIMITS OF DISTURBANCE	LOD	LOD
PROPOSED CONTOUR	420	
EXISTING CONTOUR		
ADJACENT PROPERTY LINE		
EXISTING PROPERTY LINE		
WATER MAIN	W	W
SEWER MAIN	S	S
WATER SERVICE LATERAL	WSL	WSL
SEWER LATERAL	SSL	SSL
STORM DRAIN	ST	ST
WALL MOUNTED LIGHT		



Date	Revision	Description
11/3/21	1	MISC. REVISIONS
12/29/21	2	REVISIONS PER TIDE

PRIOR TO ANY EARTH DISTURBANCE THE CONTRACTOR SHALL CALL IN A TICKET TO DIG SAFE NY AND OBTAIN A CLEAR TO DIG

IT IS A VIOLATION OF SECTION 7209 OF THE NYS EDUCATION LAW FOR ANY PERSON TO ALTER ANY ITEM ON THIS PLAN IN ANY WAY UNLESS HE/SHE IS ACTING UNDER THE DIRECT SUPERVISION OF A PROFESSIONAL ENGINEER.

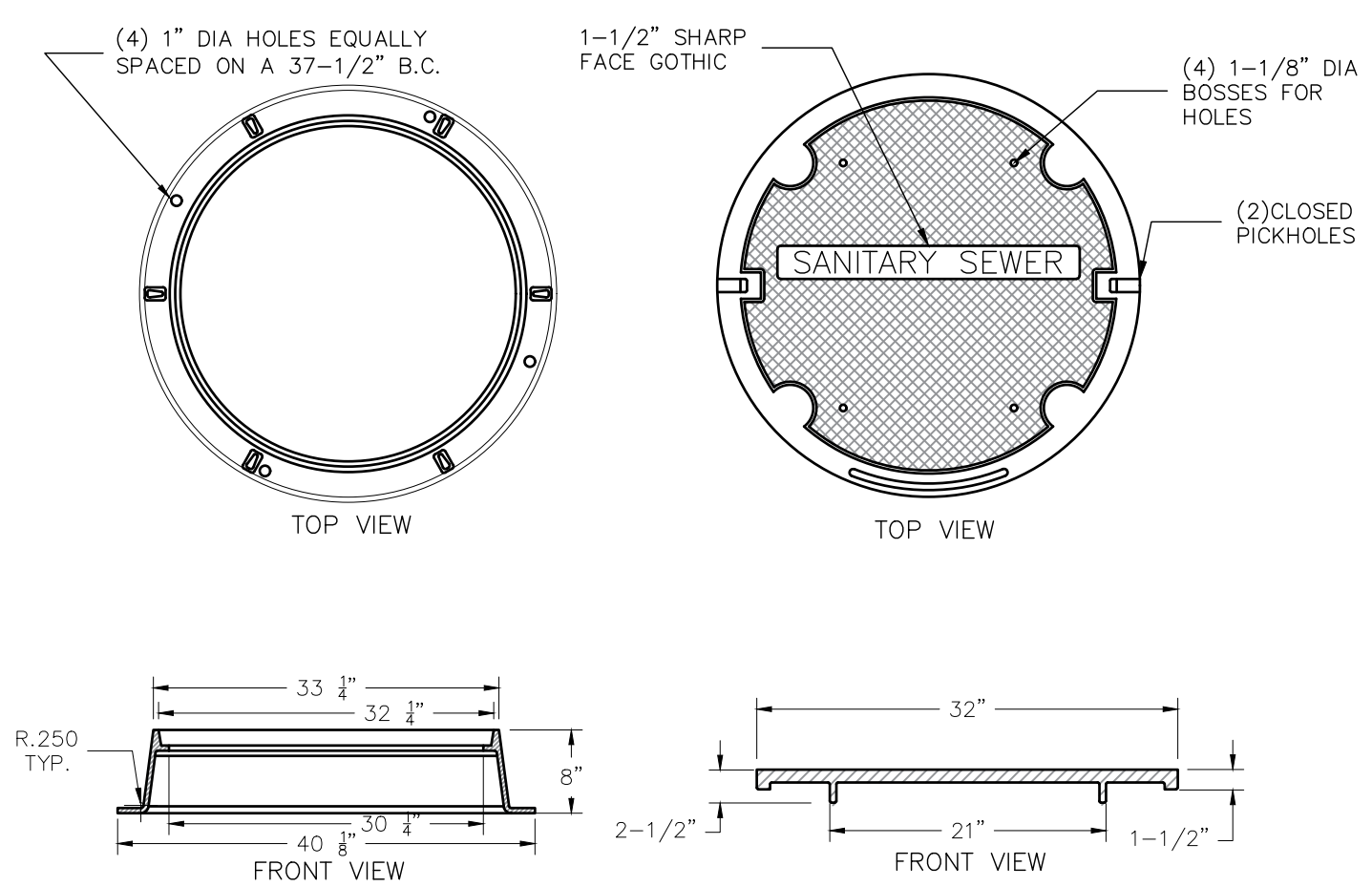


EMPIRE ENGINEERING, PLLC
1900 DUANEBSBURG ROAD
DUANEBSBURG, NY 12056
PH: (518) 858-4117
EMAIL: CLONGO@EMPIREENG.NET

PROJECT
DAIM LOGISTICS, INC.
128 PARK DRIVE
GLEN PARK
FULTONVILLE, NY 12072

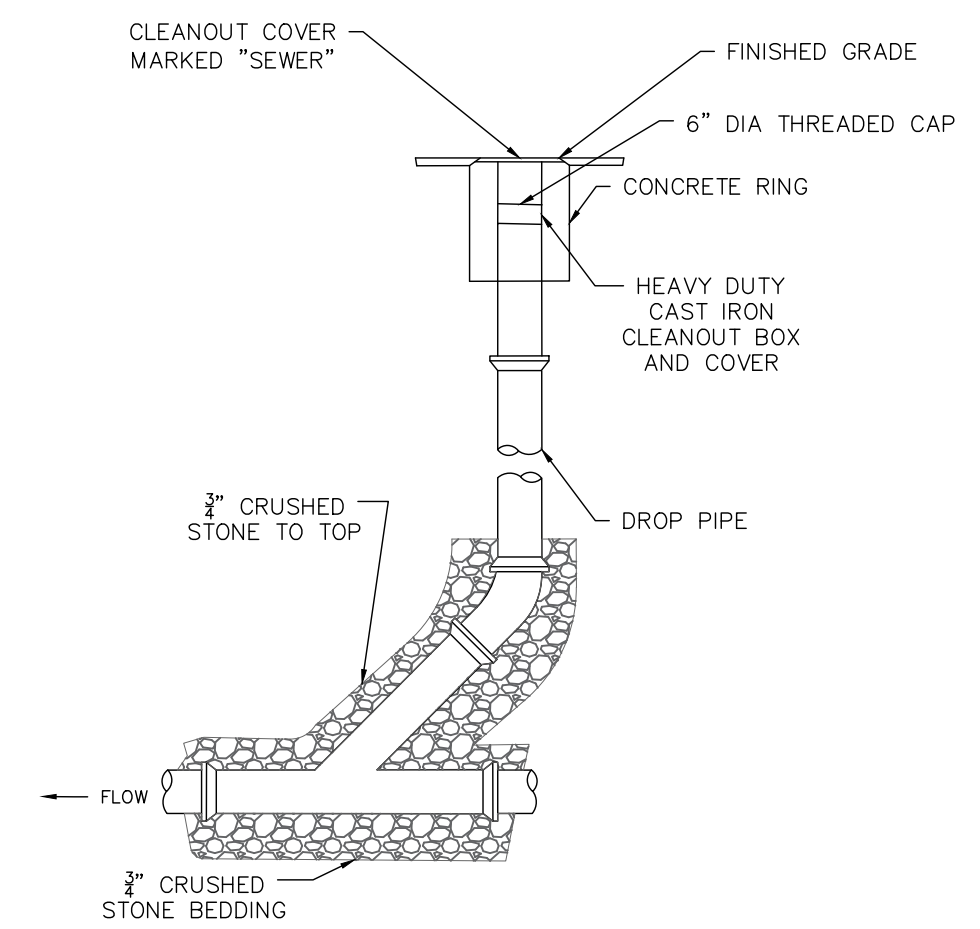
Date	10/20/2021	Sheet	C102
Scale	1"=40'		
Job#	21004	Sheet 2 of 5	

INSET MAP
TOWN OF GLEN TAX MAP
MONTGOMERY COUNTY NY
SECT. 52.0-4



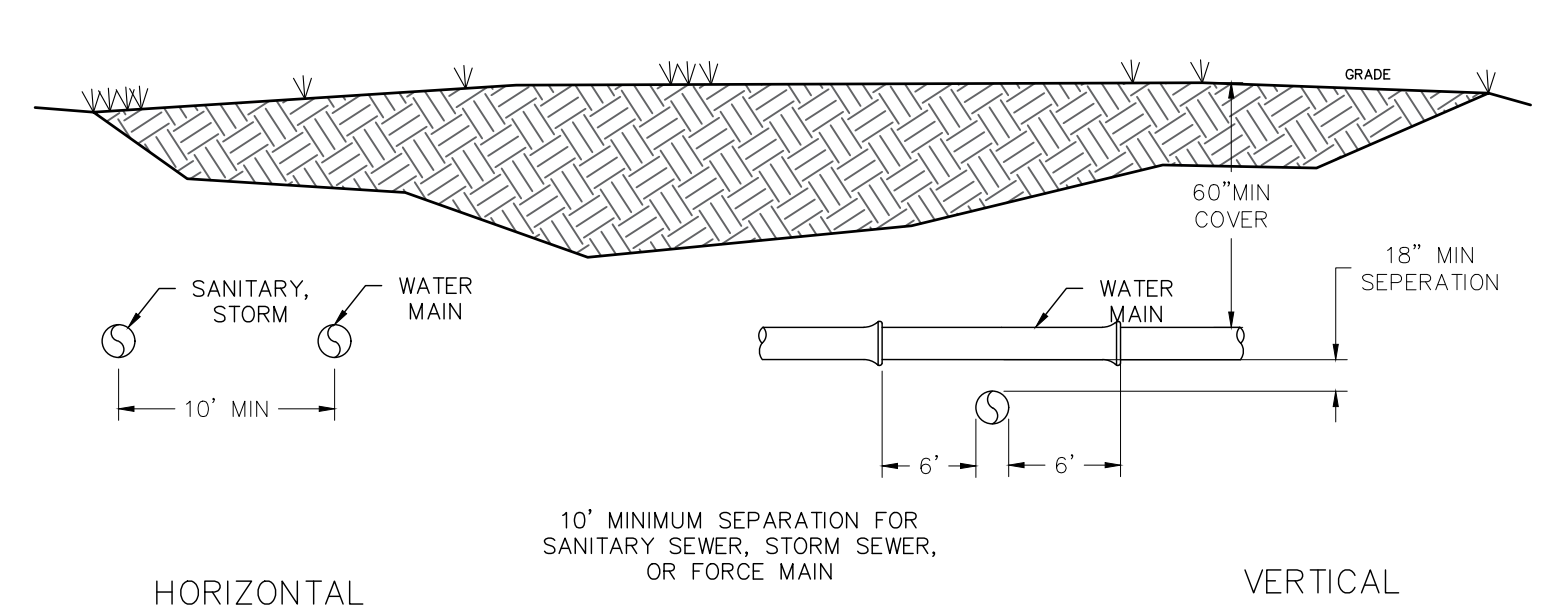
NOTES
1. BY EJ PRESCOTT MODEL: C-29/62091 600. OR APPROVED EQUAL

1 TYP. MANHOLE FRAME AND COVER
501



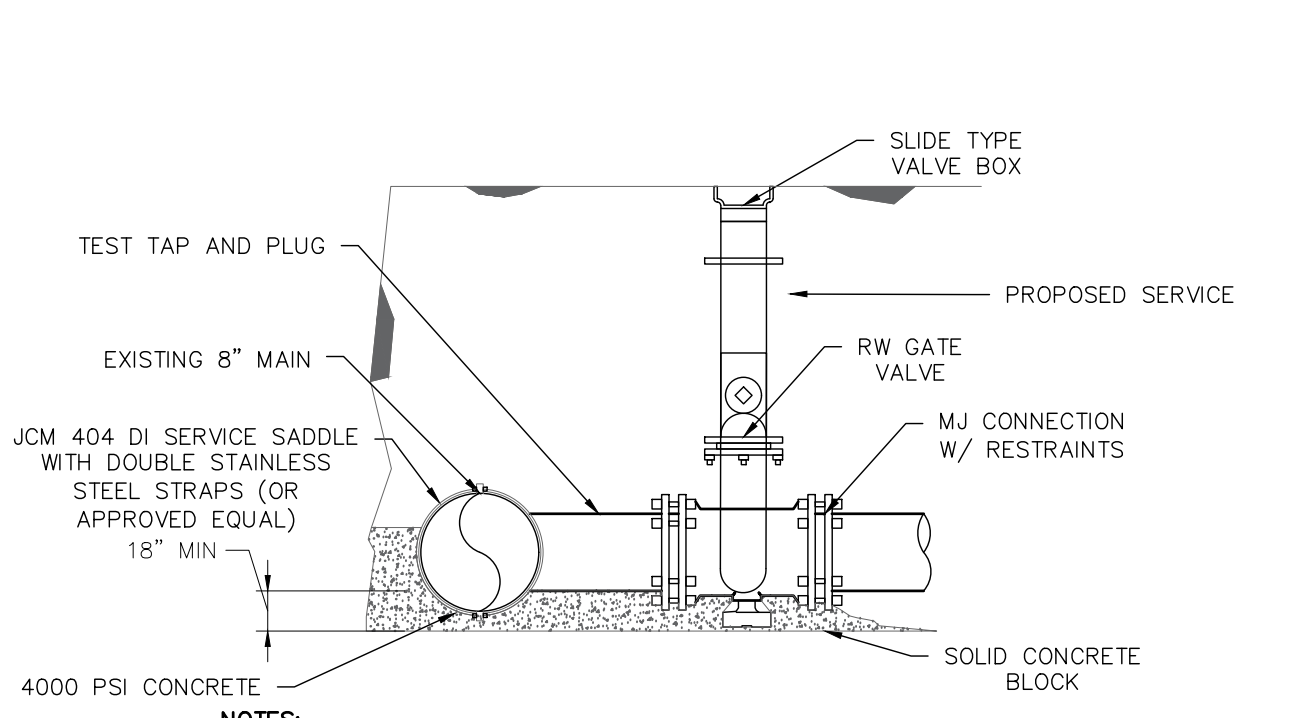
NOTES
1. CLEANOUTS TO BE INSTALLED WHERE INDICATED ON THE PLANS
2. CLEANOUT PIPE TO BE THE SAME SIZE AND MATERIAL AS SEWER/DRAIN LINE UP TO 8"

2 SEWER CLEANOUT DETAIL
501 NOT TO SCALE



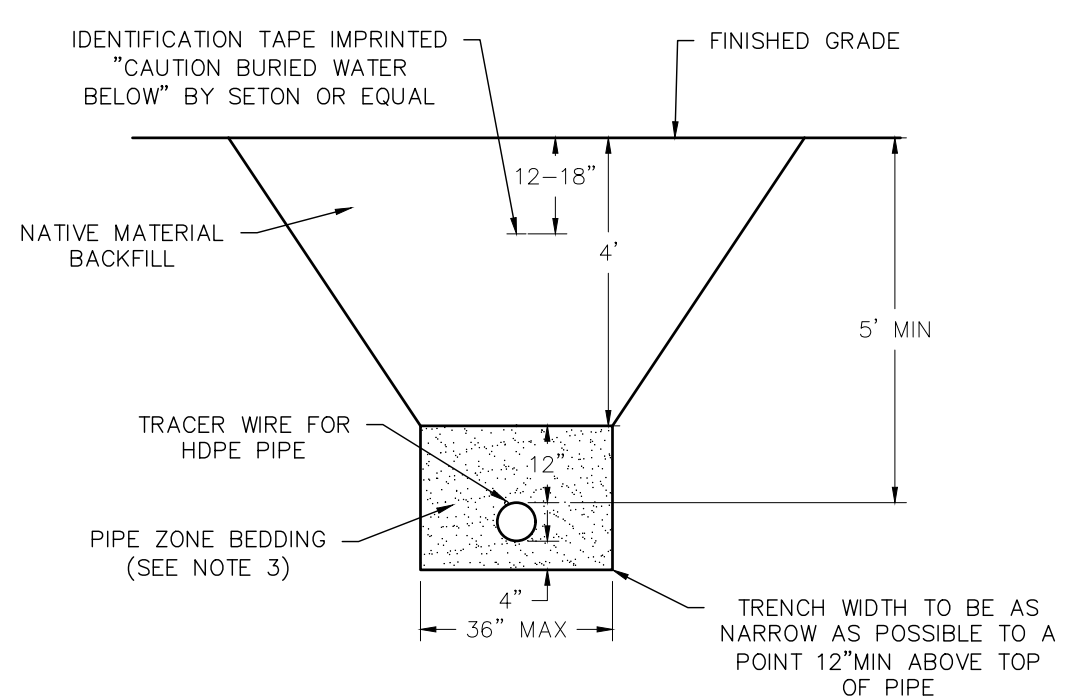
NOTES
1. WATER MAINS SHALL BE SEPARATED FROM STORM SEWER, SANITARY SEWER, NON-POTABLE IRRIGATION MAINS, AND FORCE MAINS BY A MINIMUM CLEAR VERTICAL DISTANCE OF 18 INCHES MEASURED BETWEEN THE BOTTOM OF THE UPPER PIPE AND THE TOP OF THE LOWER PIPE. ALSO WATER MAINS MUST BE SEPARATED FROM STORM SEWER, SANITARY SEWERS, AND FORCE MAINS BY 10 FEET AND FROM IRRIGATION MAINS BY 5 FEET MEASURED HORIZONTALLY BETWEEN OUTSIDE OF PIPES.
2. ALL CROSSINGS WITH VERTICAL CLEARANCE LESS THAN 18 INCHES SHALL BE MADE USING THICKNESS CLASS 200 AWMA C-900 DR14, PVC (CLASS 165 AWMA C-905, DR 25, PVC FOR PIPES GREATER THAN 12" DIAMETER) OR DUCTILE IRON, PRESSURE CLASS 250 PIPE FOR A HORIZONTAL DISTANCE OF 10 FEET ON EACH SIDE OF THE CROSSING. WATER MAIN CONCRETE ENCASEMENT SHALL ONLY BE MADE AFTER WRITTEN APPROVAL OF THE WATER DIRECTOR OR HIS/HER DESIGNEE. (SEPARATION REQUIREMENTS ALSO APPLY TO WATER AND SEWER LATERALS).
3. 18 INCHES CLEAR DISTANCE SHALL NOT BE REDUCED IN CASES WHERE WATER CROSSES UNDER SEWER LINE.
4. WATER MAINS, SANITARY SEWERS, STORM SEWER, AND NON-POTABLE IRRIGATION MAINS SHALL BE IN SEPARATE TRENCHES.

3 PIPE SEPERATION DETAIL
501 NOT TO SCALE



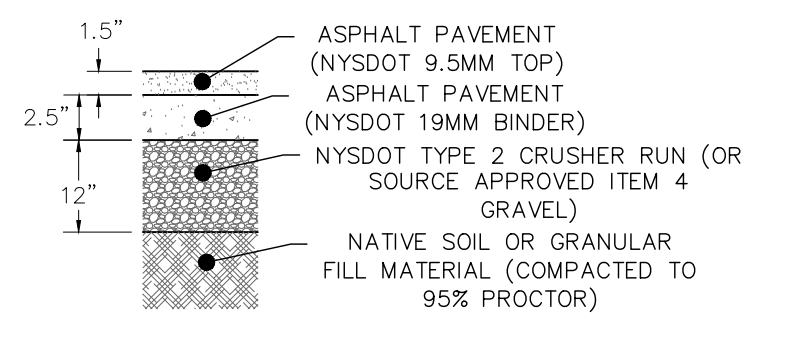
NOTES
1. TEMPORARILY SUPPORT TAPPING SADDLE AND VALVE AND APPLY STANDARD HYDROSTATIC TEST.
2. IF NO LEAKS, POUR INDICATED PERMANENT CONCRETE BLOCK AND SUPPORT PAD.
3. MAKE TAP, LINE EXTENSION AND BACKFILL.
4. COVER UP GLANDS AND BOLTS WITH HEAVY POLYETHYLENE SHEETING TO KEEP CONCRETE FROM BONDING. TYPICAL WHENEVER BOLTS OR GLANDS MAY BE "WRAPPED-UP" IN CONCRETE.
5. COAT TAPPING SLEEVE AND BOLTS WITH AN APPROVED BITUMASTIC COATING BEFORE POURING CONCRETE. TYPICAL FOR ALL STEEL INCLUDING, RODS, COUPLINGS, STRAPS, AND OTHER BURIED STEEL.

4 TAPPING SLEEVE AND VALVE DETAIL
501 NOT TO SCALE



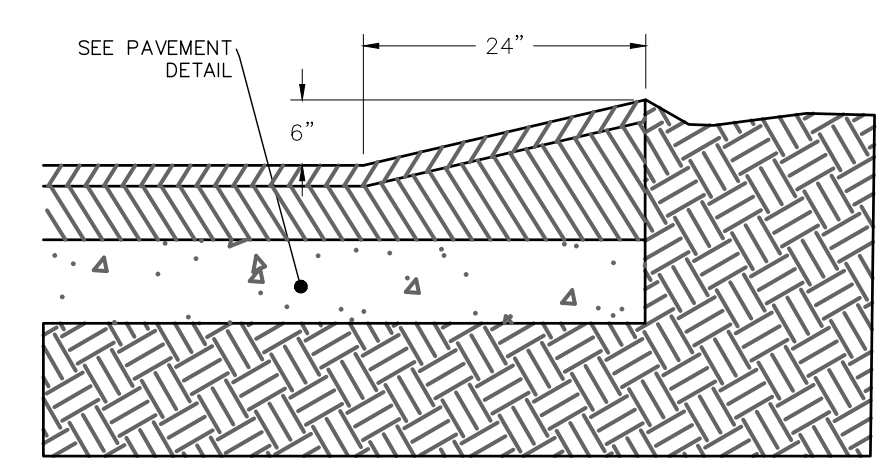
NOTES
1. WATER SERVICE LATERAL SHALL BE INSTALLED IN ACCORDANCE WITH APPLICABLE MUNICIPAL SPECIFICATIONS.
2. INDIVIDUAL SIZE SHALL BE DETERMINED BASED ON REQUIRED FLOW TO STRUCTURE.
3. SAND SHALL BE FROM AN APPROVED SOURCE COMPACTED IN 6" LIFTS TO MINIMUM 12" ABOVE TOP OF PIPE.

5 WATER SERVICE DETAIL
501 NOT TO SCALE

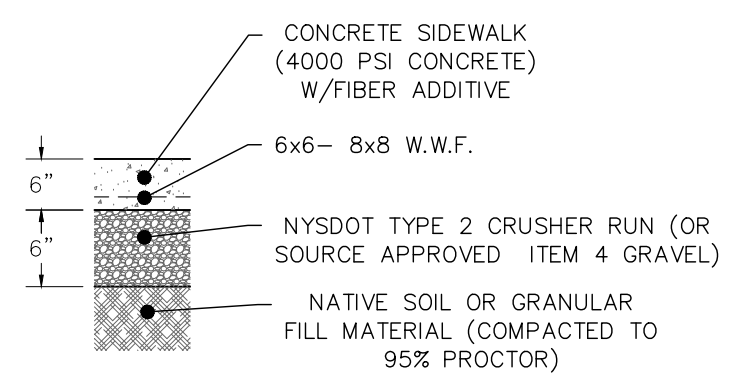


NOTES
1. ITEM 4 GRAVEL MAY BE USED IN-LEU OF TYPE 2 CRUSHER RUN ONLY A.O.B.E.
2. ALL IMPORTED MATERIAL SHALL BE COMPACTED TO 95% PROCTOR.

6 ASPHALT PAVEMENT DETAIL
501 NOT TO SCALE

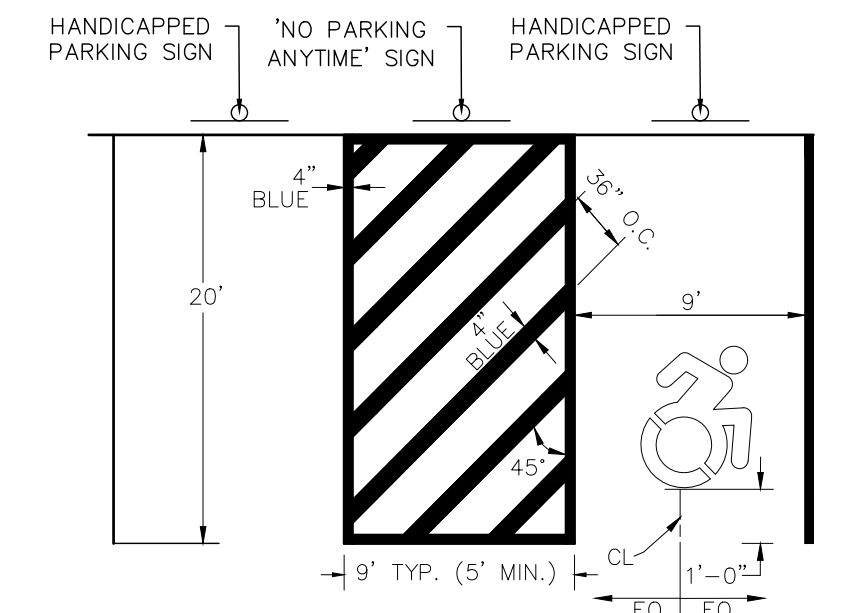


7 ASPHALT WING WEDGE DETAIL
501 NOT TO SCALE



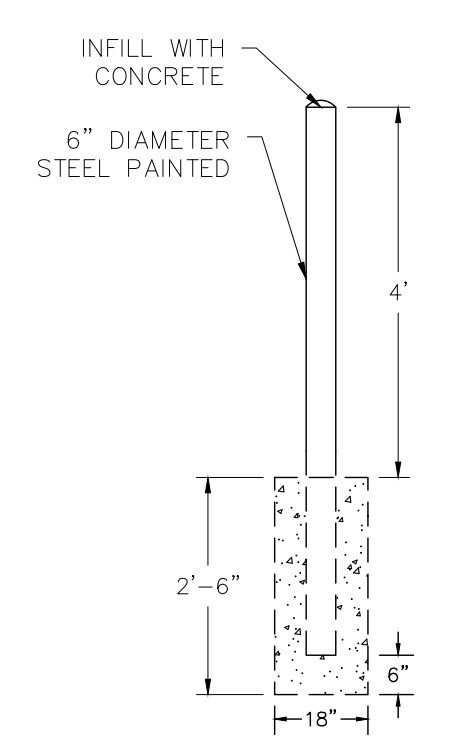
NOTES
1. 5" TYPICAL WIDTH
2. BROOM FINISH
3. PROVIDE A TOOLED JOINT EVERY 5'
4. SAWCUT CONTROL JOINTS EVERY 20'

8 CONCRETE DETAIL
501 NOT TO SCALE



NOTES
1. ALL DIMENSIONS SHALL BE IN ACCORDANCE WITH ADA STANDARDS AND CURRENT ZONING AND SITE REGULATIONS.
2. PAINTED HANDICAP SYMBOL TO BE IN ACCORDANCE WITH ADA STANDARDS.
3. SLOPE OF PAVEMENT SURFACE IN HANDICAP PARKING SHALL NOT EXCEED 2% IN ANY DIRECTION.
4. SEE PLAN FOR ACTUAL LOCATION OF SIGNAGE.

9 TYPICAL HANDICAPPED SPACE DETAIL
501 NOT TO SCALE



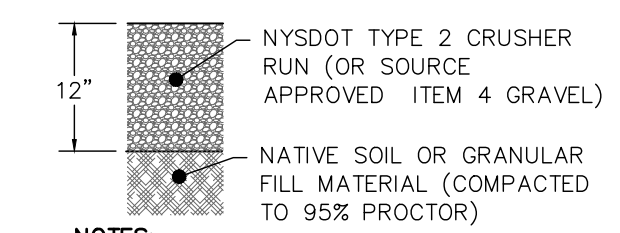
NOTES
1. BOLLARDS SHALL BE PAINTED FOR HIGH VISIBILITY, AND FOR PREVENTION OF RUST.

10 BOLLARD DETAIL
501 NOT TO SCALE

MUTCD	R7-8	R7-1	R7-8P	R1-1
SIZE	18"x9"	24"x30"	18"x9"	30"x30"
HT.	7'	7'	7'	7'

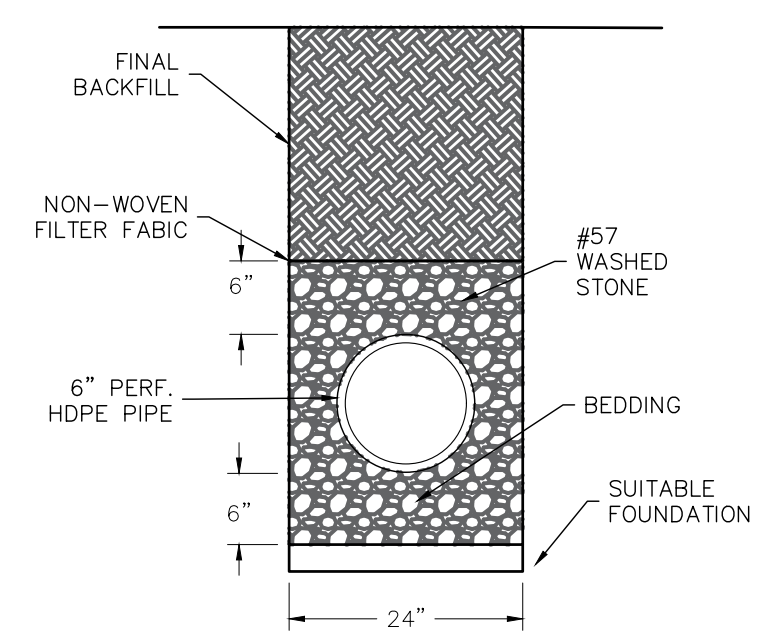
NOTES
1. ALL SIGNS SHALL BE INSTALLED USING A TYPE "A" SIGN POST.
2. ALL SIGNS SHALL CONFORM TO THE FHWA MUTCD STANDARDS AND THE NYS SUPPLEMENT H.C. SIGN POST SHALL BE SET IN BOLLARD PRIOR TO FILLING WITH CONCRETE.

11 SIGN TABLE
501 NOT TO SCALE



NOTES
1. ITEM 4 GRAVEL MAY BE USED IN-LEU OF TYPE 2 CRUSHER RUN ONLY A.O.B.E.
2. ALL IMPORTED MATERIAL SHALL BE COMPACTED TO 95% PROCTOR.

12 GRAVEL AREA DETAIL
501

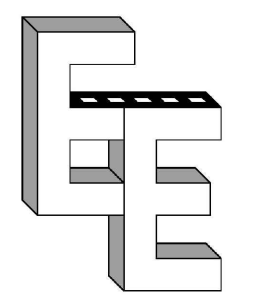


13 UNDERDRAIN DETAIL
501 NOT TO SCALE

Date	Revision Description
11/3/21	MISC. REVISIONS
No. 1	

PRIOR TO ANY EARTH DISTURBANCE THE CONTRACTOR SHALL CALL IN A TICKET TO DIG SAFE NY AND OBTAIN A CLEAR TO DIG

IT IS A VIOLATION OF SECTION 7209 OF THE NYS EDUCATION LAW FOR ANY PERSON TO ALTER ANY ITEM ON THIS PLAN IN ANY WAY UNLESS HE/SHE IS ACTING UNDER THE DIRECT SUPERVISION OF A PROFESSIONAL ENGINEER.



EMPIRE ENGINEERING, PLLC
1900 DUANESBURG ROAD
DUANESBURG, NY 12056
PH: (518) 858-4117
EMAIL: CLONGO@EMPIREENG.NET

PROJECT
DAIM LOGISTICS, INC.
128 PARK DRIVE
GLEN PARK
FULTONVILLE, NY 12072

Title	
SITE & UTILITY DETAILS	
Date	Sheet
10/21/2021	C501
Scale	Sheet 3 of 5
AS SHOWN	

