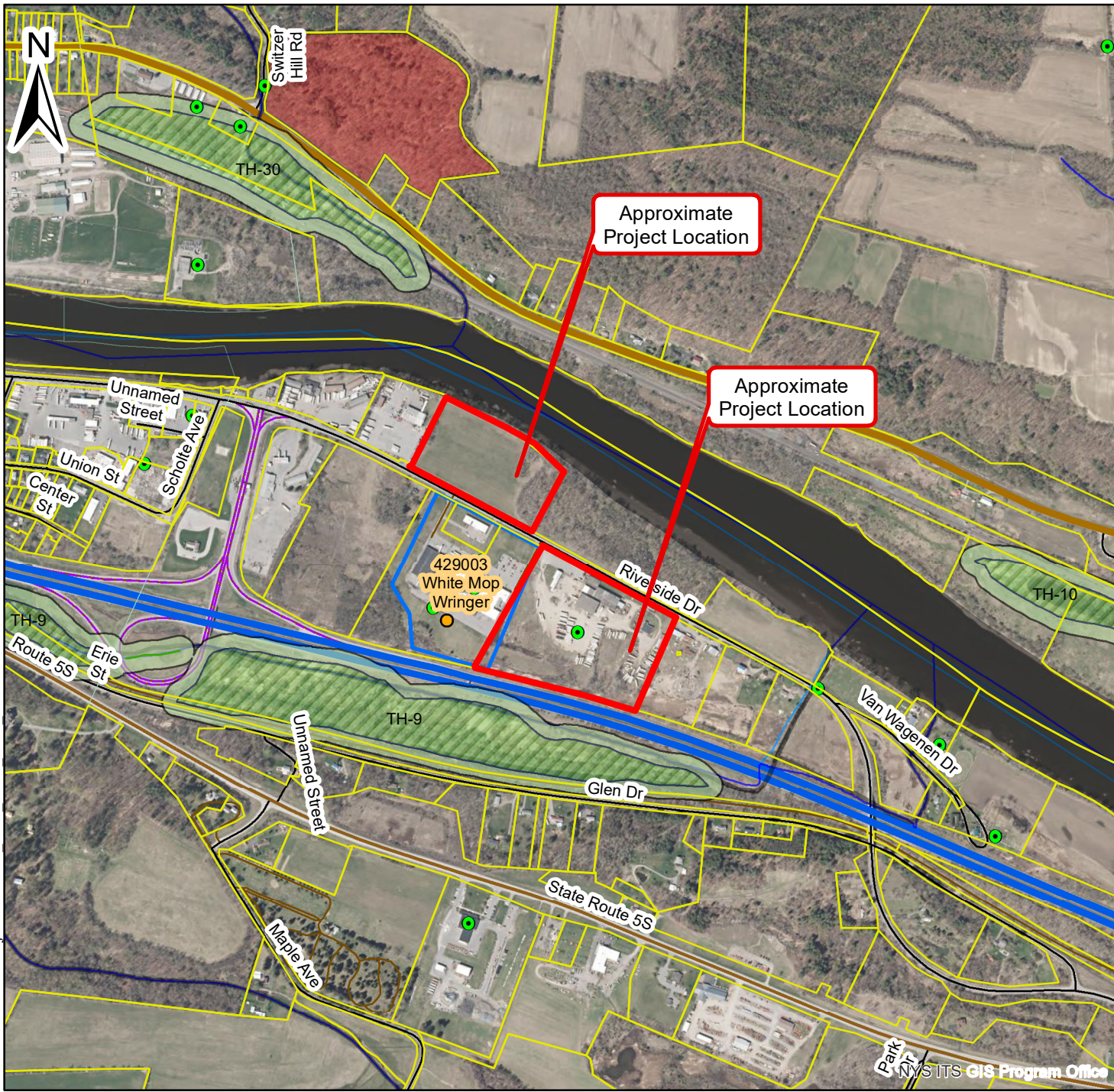


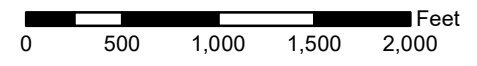
Division of Environmental Permits Projection: NAD 1983 UTM Zone 18N



# NYS RESOURCES MAP

## Carver Companies Business Park 189 and 218 Riverside Drive Town of Glen Montgomery County

November 3, 2021



1 inch equals 1,000 feet

### Legend

- Regulated Adjacent Area Boundary
- Freshwater Wetland Class 1
- Freshwater Wetland Class 2
- Freshwater Wetland Class 3
- Freshwater Wetland Class 4
- Freshwater Wetland Separation Line
- Freshwater Wetland (linear)
- Unprotected Streams
- Protected Streams
- Deed Restrictions



**Department of  
Environmental  
Conservation**

*Disclaimer: This map was prepared by Region 4 NYSDEC Division of Environmental Permits using the most current data available. It is deemed accurate but is not guaranteed. NYSDEC is not responsible for any inaccuracies in the data and does not necessarily endorse any interpretations or products derived from the data. This map may contain information that is considered sensitive and therefore the distribution of this map is strictly prohibited. Additional resources may be present but not depicted on this map.*

NYS ITS GIS Program Office