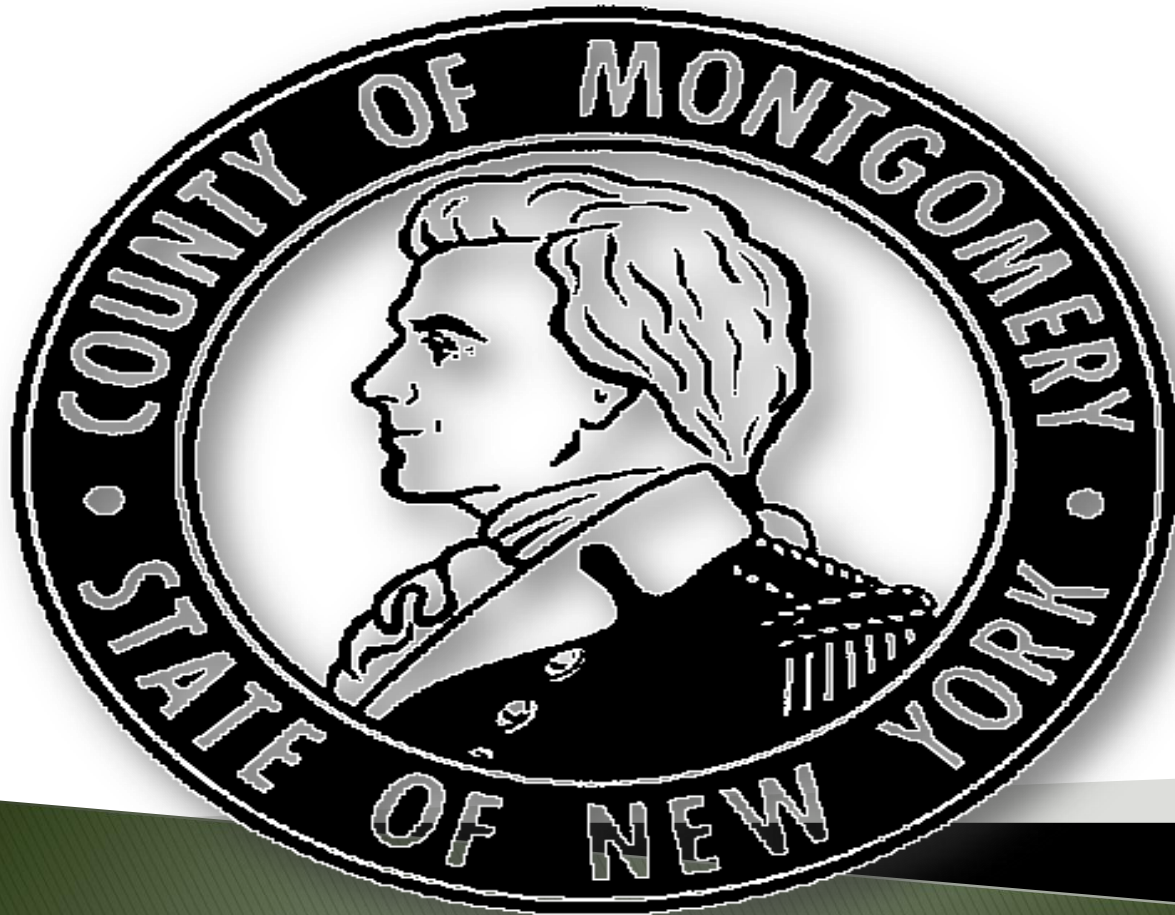


# **STATE OF THE COUNTY**



February 28, 2014



# Montgomery County Legislature 2014

# A Fresh Start


# Hit The Ground Running





# New Government – Smooth Transition

## **Since January 1<sup>st</sup>:**

- ▶ Achieved Smooth Transition in County Operations
  - ▶ Negotiated Landmark Inter-municipal Solid Waste Agreement & Began Shaping Solid Waste Plan to be presented to the Legislature on March 10
  - ▶ Kick-started contract negotiations
  - ▶ Taken Steps to Modernize County Government
- 



**Working Together**  
*Montgomery County Leadership Team*

# Preparing for Opportunity



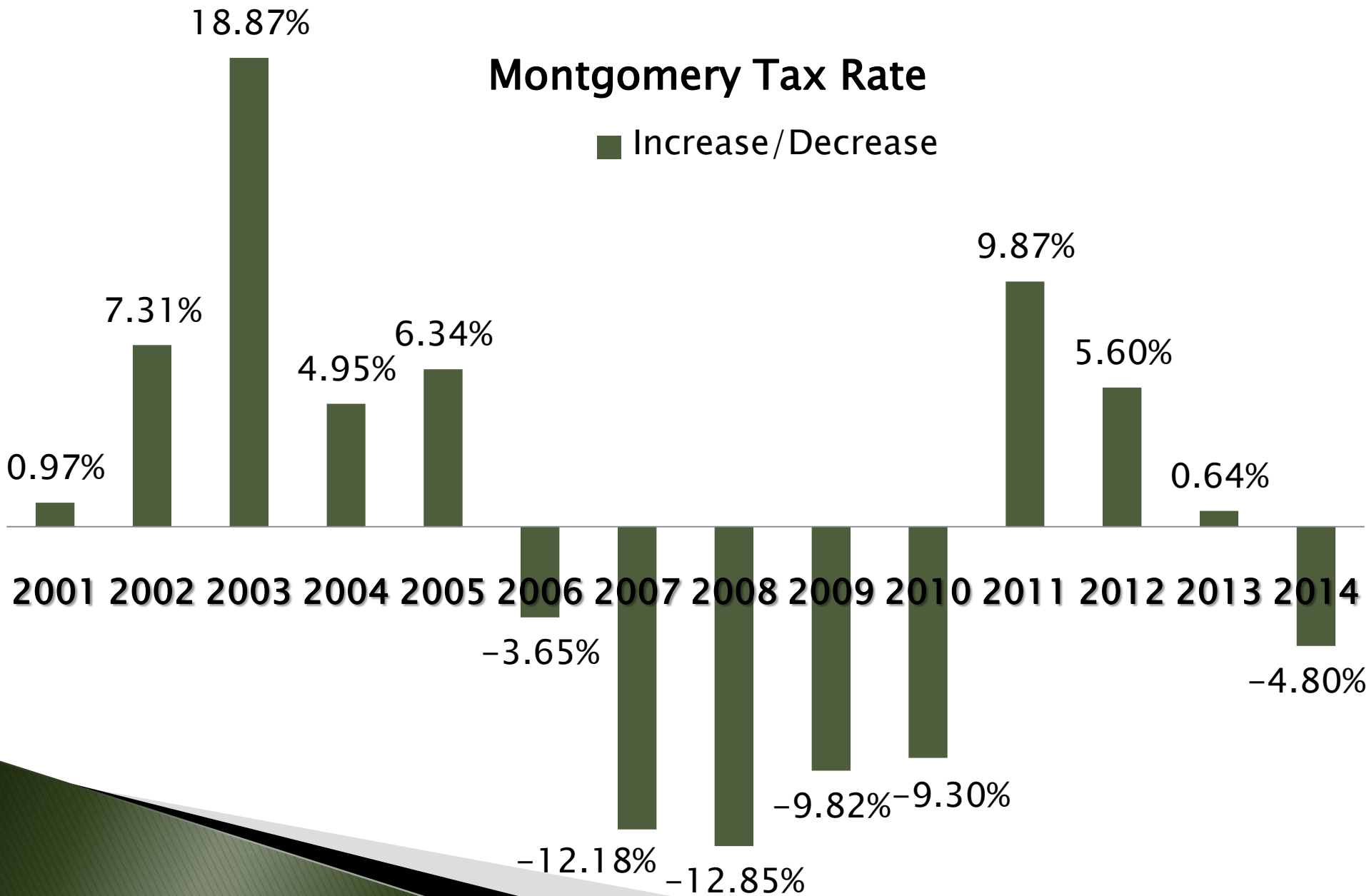
***“Success always comes when preparation meets opportunity”  
— Henry Hartman***



# Tax Rate Instability

## Montgomery Tax Rate

■ Increase/Decrease





# It's Time To Get Our Fiscal House In Order.

- ▶ That is why we are working on a 5 Year Financial Plan that will:
  - Balance our budget
  - Stabilize the tax levy and fund balance
  - Respect and live within the tax cap
  - Incorporate the 6-Year Capital Plan



# State Mandates – Your Property Taxes

How property taxes are affected by State and Federal mandates in Montgomery County.

“Mandates” are Federal and/or State created programs that are required to be operated by lower level governments. In New York State, most of these mandates are not accompanied by State money to pay for them or are only partially paid for. Because County government relies upon property taxes to operate, expensive State mandates become expensive property taxes on local taxpayers.

The 2014 County General Fund budget totals \$82,272,243. Of that amount, \$40,238,573 is for programs mandated by New York State with a net cost of \$24,378,841 to the taxpayers of Montgomery County. County government has little or no control over these costs.

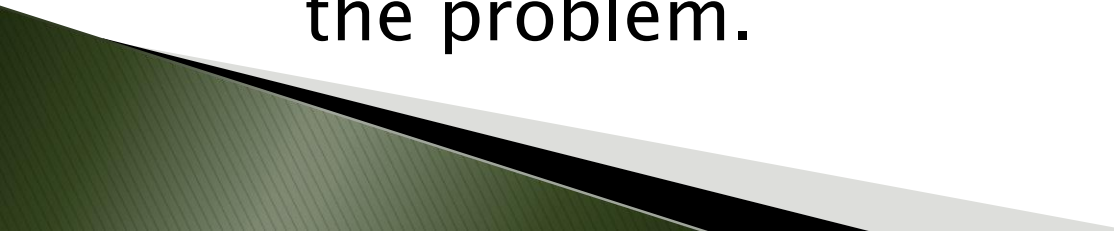
## New York State Unfunded Mandates

Medicaid	\$12,309,409
Pensions	3,467,830
Corrections	3,301,735
Community Colleges	1,920,821
Pre-School Ed & Early Intervention	1,258,719
Social Services	1,212,476
Indigent Legal Defense	486,865
Probation	<u>420,986</u>
	<b>\$24,378,841</b>

In 2014, these unfunded mandates will consume 92% of the \$26,517,462 Tax Levy.  
This only leaves \$2,138,621 of the tax levy available for all other services  
and functions of County Government.

# Let's Start Digging

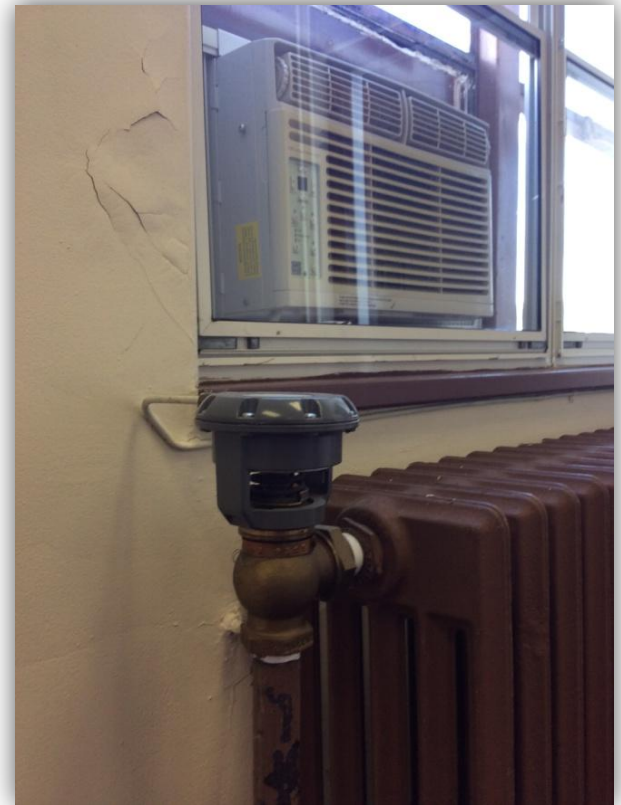
Let's take a closer look at mandates:

- ▶ How can we save money?
  - ▶ Are we doing all we can to be efficient and protect vital public services?
  - ▶ We can only advocate on the state level and provide solutions when we fully understand the problem.
- 

# Modernize Operations

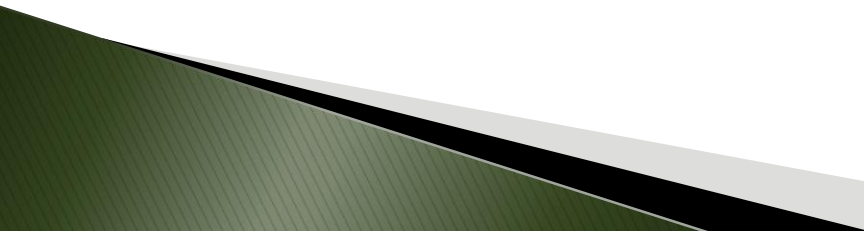
- Our outdated and inefficient buildings are located directly in the flood zone, costing taxpayers.

Fact: We have spent over \$2 million in remediation after the last two floods at the annex building.





# The Time to Invest is NOW

- ▶ We have already taken steps to update our IT infrastructure, phone and 911 systems.
  - ▶ We are gathering the data regarding the inefficiencies and unnecessary expenses incurred at our County Buildings.
  - ▶ In March, Capital Plan requests will be distributed to Department Heads.
- 

# Montgomery County is a place for PROFESSIONALS

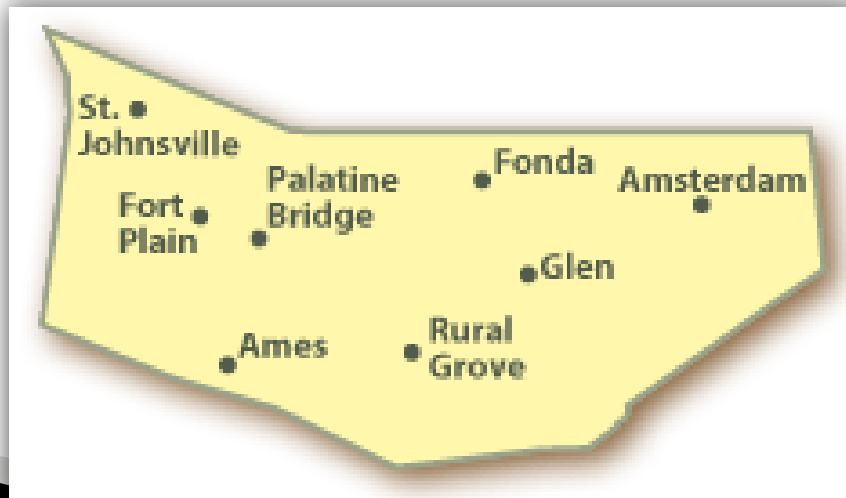
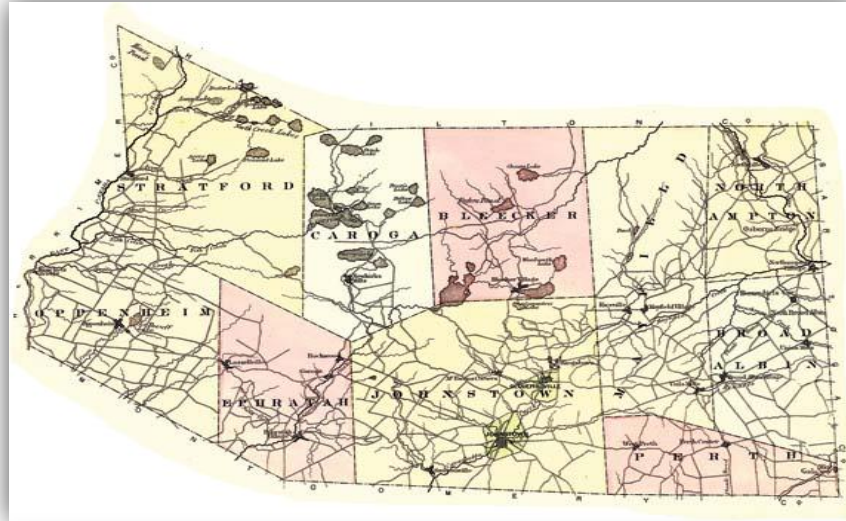


# Motivate Workforce

- Leading by example; taking time to listen and support our employees
- We're negotiating contracts in good faith securing stability for both labor and management
- Working to ensure merit based decision making, a smarter evaluation process, and a new era of labor management relations



# Montgomery & Fulton Counties Working Regionally





# Opportunities to Grow



## The Regional Business Plan

- ▶ Develop large and small shovel-ready sites
- ▶ Educate and train the region's students for a 21st century workforce
- ▶ Lower local property tax burden in the region
- ▶ Extend water, sewer, utilities and broadband service
- ▶ Improve the region's quality of life
- ▶ Market the region



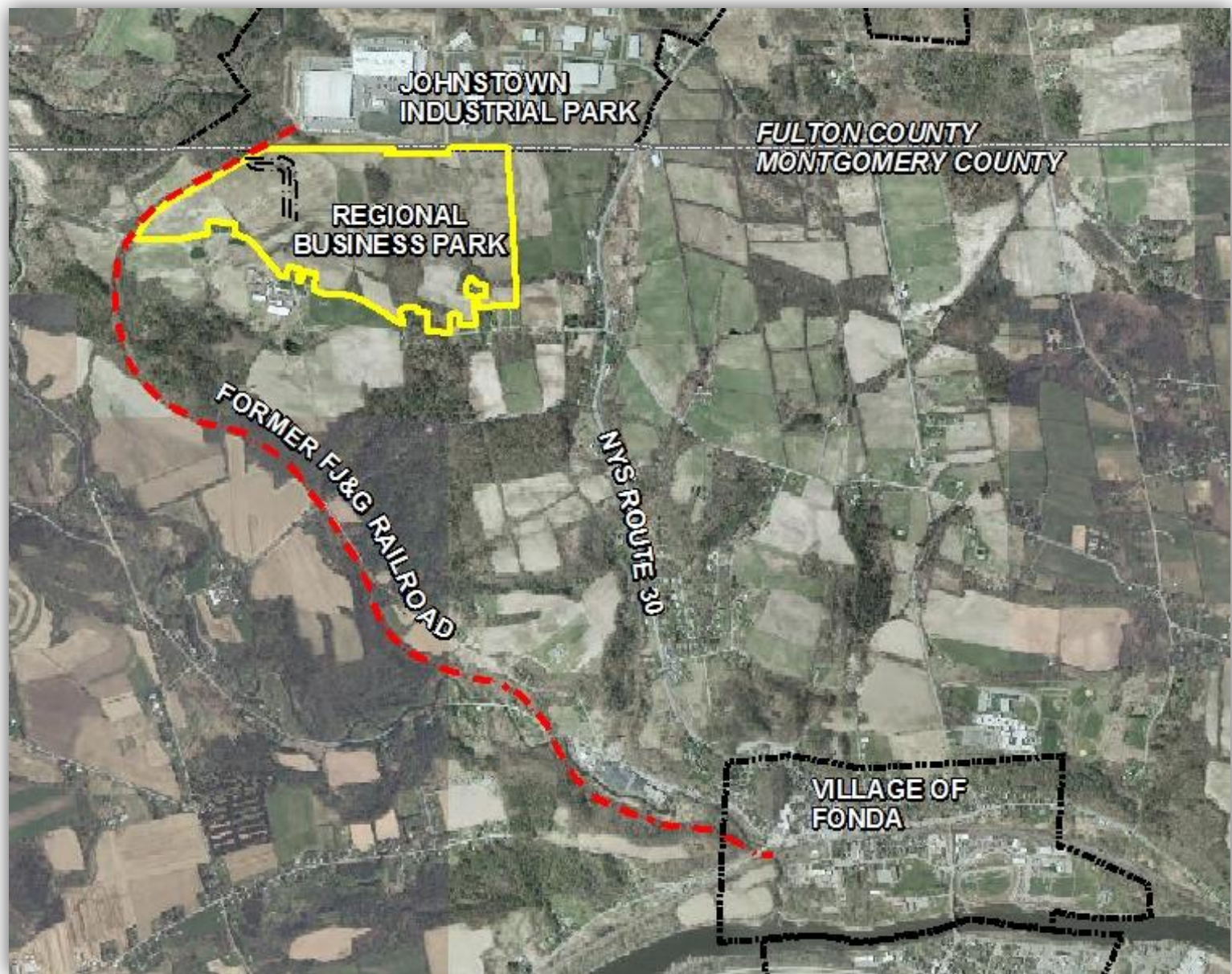
# Regional Business Park

Its development represents a “win-win” for the entire region and is the premier shovel ready large lot rail siting site in the Northeast.

**Inter- municipal collaboration** brings together the particular resources of each municipality (e.g. water, sewer, infrastructure, land, etc.) and allows for revenue sharing among all participants, and the spreading of positive impacts over the entire region (jobs, expendable income, related commercial services, etc.).

Development of the regional industrial park would generate substantial real property tax revenues in contrast to the limited tax revenue currently generated.

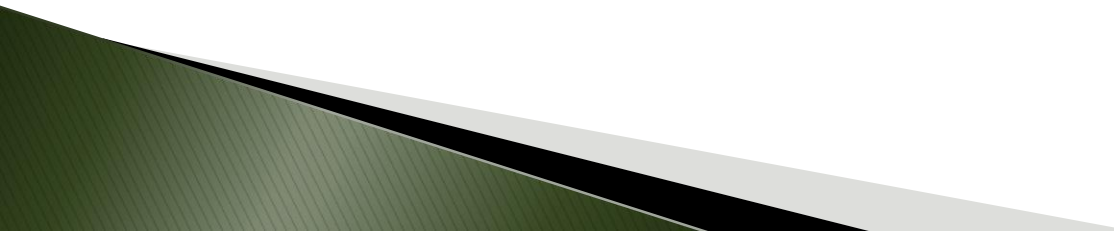




# Regional Business Park




# Branding Study

- ▶ Working with North Star
  - ▶ Final reports & implementation of the 15 point action plan begins later this year
  - ▶ Define ourselves as a region
  - ▶ Targeted outreach to site selectors & companies
- 



# Ongoing Economic Development Initiatives

- ▶ Hampton Inn & Suites completion this year
  - ▶ Updating the County Hazard Mitigation Grant and the County Agriculture & Farm Protection Plan
  - ▶ Canal Way Improvements to be completed in 1 ½ years
  - ▶ Initiate Regional Agriculture Economic Development Loan Fund with Fulton & Schoharie
  - ▶ New Industry Cluster: Distillery in the Town of Florida and hopefully Fort Plain
- 

# Casino Gaming

- ✓ County Legislature
- ✓ Town of Florida
- ✓ City of Amsterdam





# Putting People First...Preparing for the Worst



Daily Gazette



Leader-Herald



AP

# Putting People First... ...Preparing for the Worst

We're focusing on the collaboration and cooperation amongst key stake holders including federal, state and local government officials, programs such as NY Rising, non profit organizations such like Red Cross and the FMLTRC, as well as emergency management officials, local police and fire departments and faith based organizations.

Our DPW crews are currently working on flood remediation.

Community Resiliency Forum on preparedness is today!

Soil and Conservation Directory Corey Nellis is engaged in a major regional water shed study that will hopefully shed light into the rapid increase in flooding frequency.

Emergency Management Director Jeff Smith  
Is leading the way.





**“The greatness of a nation and its moral progress can be judged by the way its animals are treated”**

**— Gandhi**

**Animal Protection Commission will take a look at three critical issues facing Montgomery County:**

- 1. Puppy Mills**
- 2. Animal Cruelty**
- 3. Sheltering in Disasters**



# Stay Connected



**@CoExecOssenfort**



**Facebook.com/CoExecOssenfort**

- Emergency Management
- Tourism
- Board of Elections
- History & Archives
- Data Processing

**Routine Radio Spots**



# Stay Informed

- Legislative Meetings on YouTube
- County website will be regularly updated



# No Shortage of Opportunities

- We've Hit the Ground Running
  - We're Taking Steps Forward
  - We're Preparing for Opportunity
  - We're working every day to make Montgomery County a better place to live, work & raise a family
- 