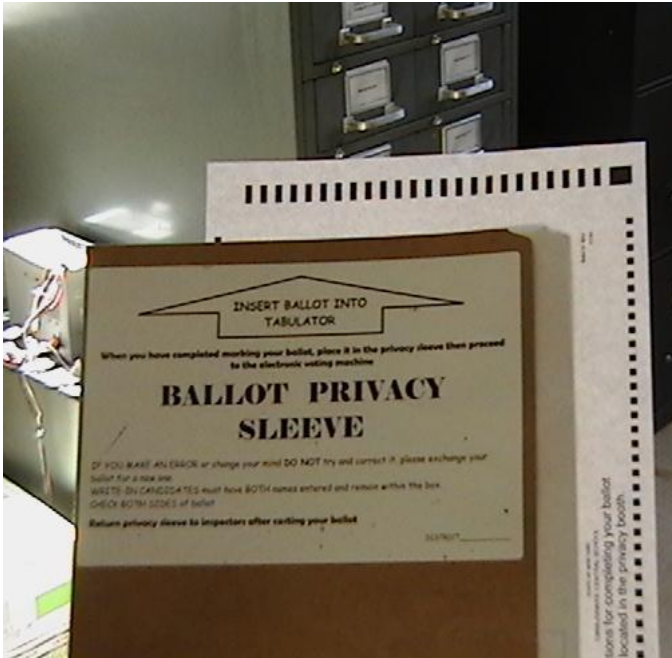


VOTING IN MONTGOMERY COUNTY

Since the 2010 elections, Montgomery County has been using a new voting system. The new voting system uses paper ballots that are counted by a tabulator and stored after the election. It is very simple and can be broken down into three steps.

Step 1

Sign in at your appropriate table, you will be handed a paper ballot and privacy sleeve and directed towards a privacy booth.



Review your selections and insert your ballot into the privacy sleeve.

Do not try and correct or erase any marks. If you make a mistake, see an inspector for a replacement ballot

Step 2

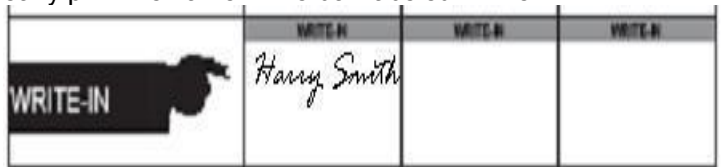
Mark only with the “special “ballot marking pen provided.



To vote for a candidate whose name is printed on the ballot, fill in the oval above the candidates name completely.



To vote for a person whose name is not printed on the ballot, clearly print the name in the box labeled “Write-In.”



Carry your ballot to the voting machine with the privacy sleeve. You must have a privacy sleeve to cast your ballot.

Step 3

Insert the end of the ballot into the tabulator when “System Ready” appears

Wait for the display “Ballot Successfully Cast” before walking away.

